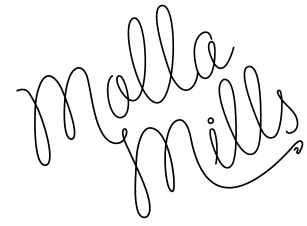


LEOPARD BAG



SIZE	w. 34 cm, h. 28 cm
YARN	Suomen Lanka, Molla and Liina kalalanka 12-ply, honey (yellow) 150 g, purple 150 g, grey 100 g, material 100 % cotton
TENSION	30 dc x 14 rows = 10 cm x 10 cm
HOOK	1,75 mm
OTHER	zipper 35 cm

START

Work the bag in closed rounds (in a tube shape) with three-color tapestry technique in double crochet (dc) stitches. In three-color tapestry crochet always change the color of the yarn in the last yarn over of the stitch (st). Carry the other yarns inside the stitches throughout the work. Start all rounds with three chain sts, this will form the first dc of the round. Close all rounds with a slip stitch (sl st) into the third chain.

MAKE

Rnd 1. Chain 99 sts with yellow yarn to begin, work the first dc in the fourth chain from the hook. Work 1 dc in the same st, work 8 dc, change to purple yarn in the last yarn over. Work 6 dc and change to grey yarn.
Follow the pattern chart, the pattern repeat is 100 sts.
Work 6 dc in the last chain in yellow yarn, turn and continue working in the other edge of the starting chain. Close the round with a slip stitch into the third chain. There are 200 dc sts in total.

Rnd 2 - 38. Chain 3 to start every round, follow the pattern chart.

Rnd 39. Work a round of single crochet stitches with yellow yarn, carry all yarns in the work.




Cut yarns and weave in ends.

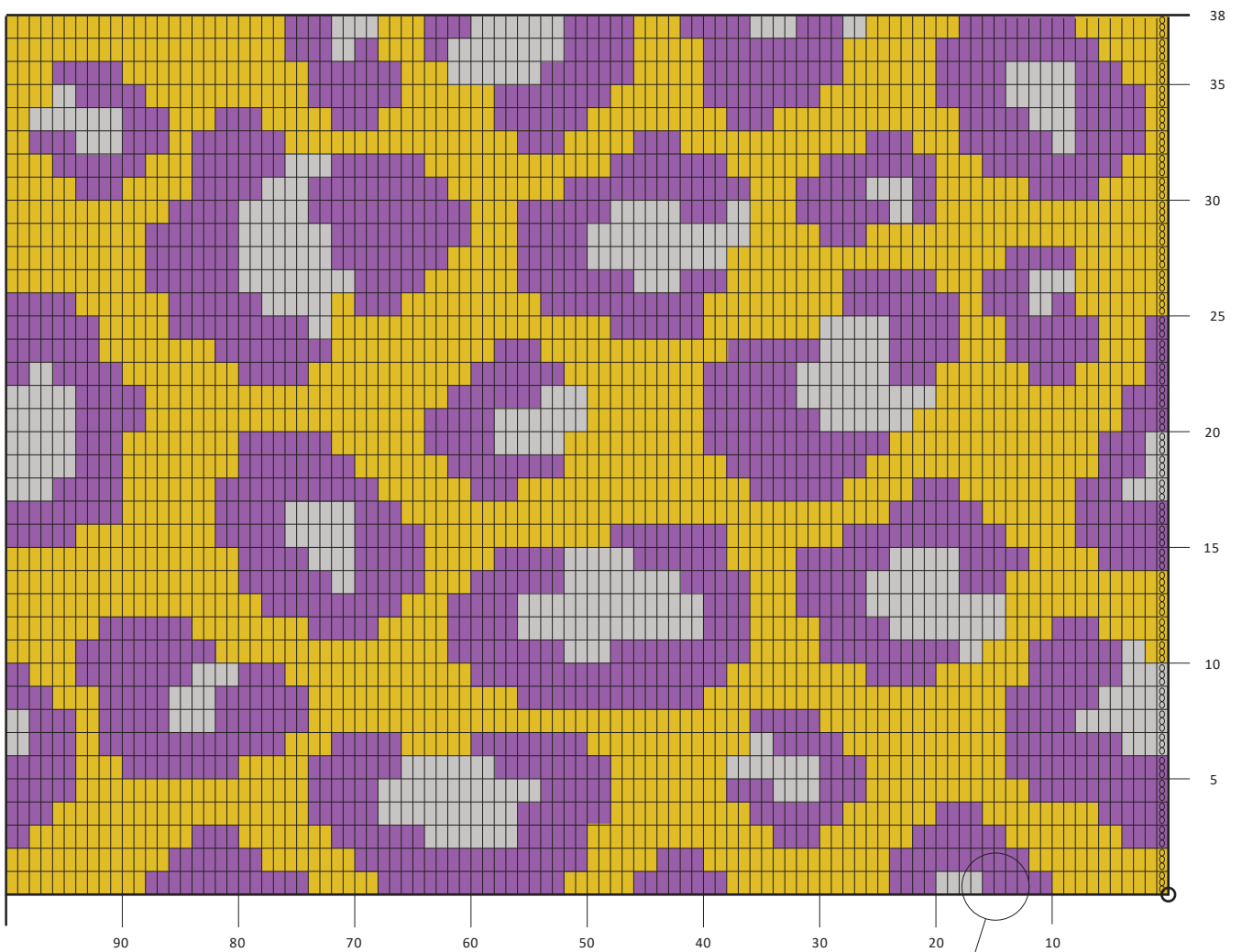
FINISH

Sew a zipper in the top edge of the bag by hand or a sewing machine. Sew a cotton ribbon inside the upper edge by hand to strenghten the work and to hide the zipper seam.

Leopard pattern can be made back and forth as well, and you can use any kind of yarn. When working in back and forth, always leave the carry-on yarn one stitch from the end in each row to make sure yarn loops are all in the back side of the work.

LEOPARD BAG
Pattern chart

○	chain stitch		double crochet, dc, honey (yellow)		dc, grey
⊗	chain 3		dc, purple	<	slip stitch, sl st



pattern repeat 100 st

